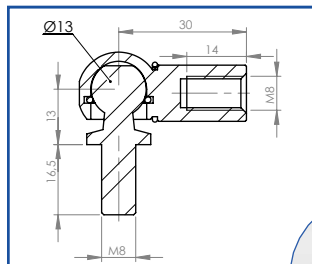


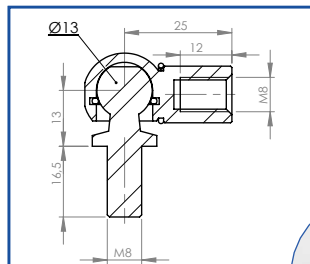
# KONCOVKY PRE PLYNOVÉ VZPERY S UKONČENÍM M8

POUŽITÉ NA PLYNOVÉ VZPERY S PRIEMEROM PIESTU 10 mm A 14 mm



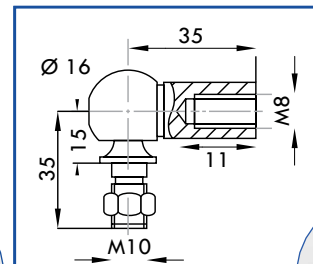
REF 92262

STEEL



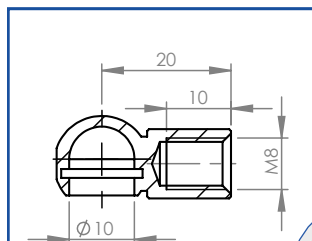
REF 92265

STEEL



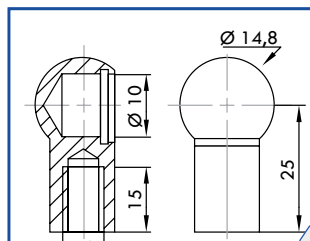
REF 92262-10-8

STEEL



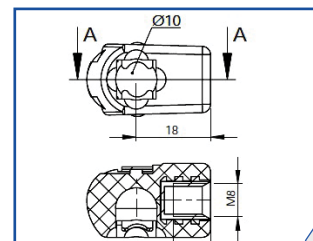
REF 92215

STEEL



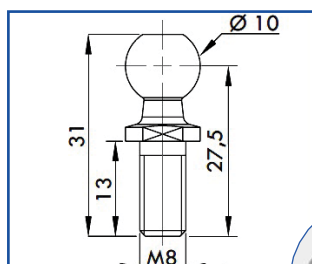
REF 92214

STEEL



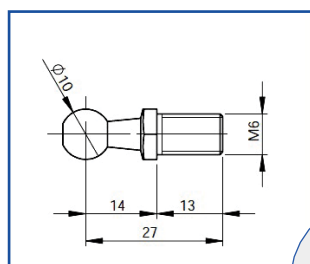
REF 72421-8

PLASTIC



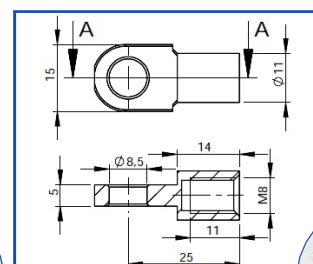
REF 92990

STEEL



REF 92989

STEEL



REF 92216

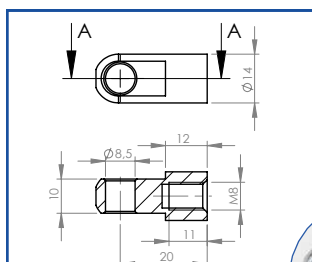
STEEL



# KONCOVKY

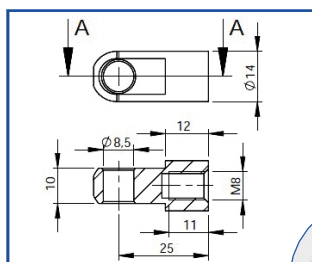
## PRE PLYNOVÉ VZPERY S UKONČENÍM M8

POUŽITÉ NA PLYNOVÉ VZPERY S PRIEMEROM PIESTU 10 mm A 14 mm



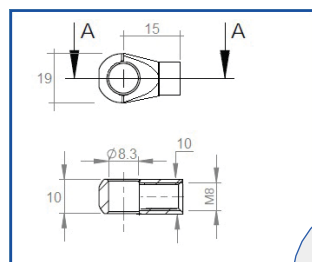
REF HG CH

STEEL



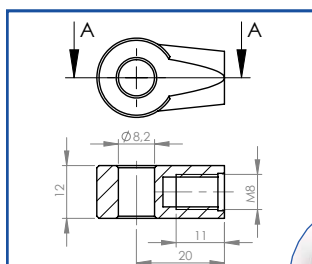
REF 92264 AC

STEEL



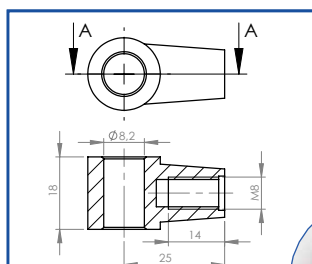
REF ST M2

STEEL



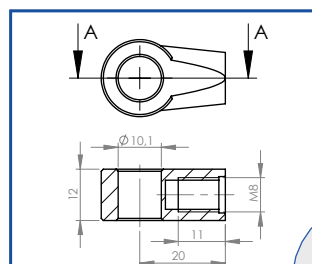
REF 92261

ZAMACK



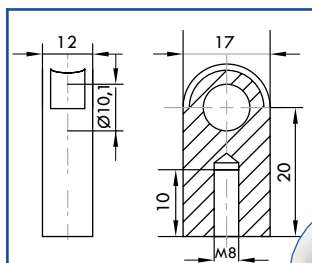
REF 92260

ZAMACK



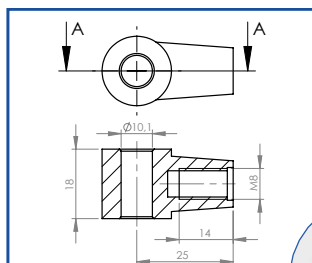
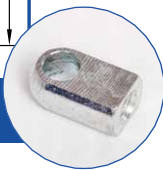
REF 92267

ZAMACK



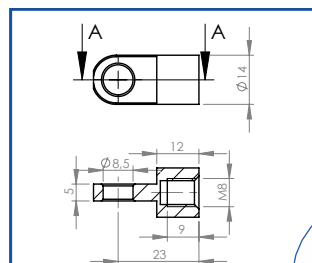
REF 92267 AC

STEEL



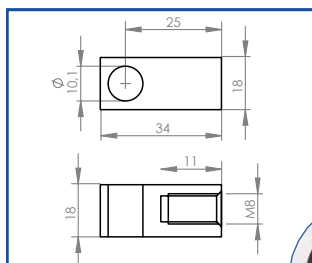
REF 92266

ZAMACK



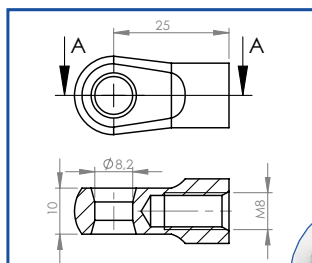
REF HG 201

STEEL



REF ST 092266N

STEEL



REF 92264

ZAMACK

