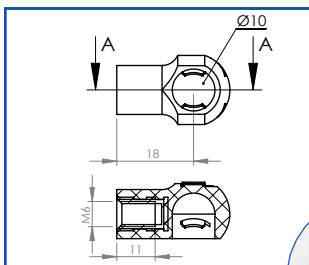


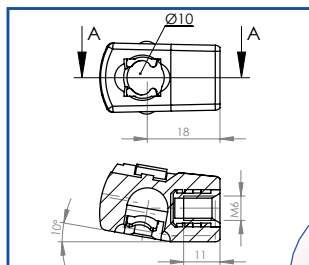
ACCESSORIES

STANDARD M6

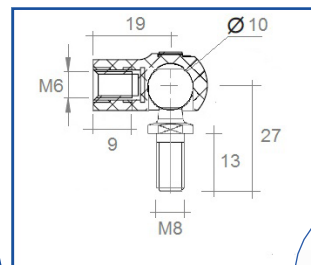
USE ONLY FOR THE GAS SPRINGS WITH A PISTON DIAMETER OF 6 mm AND 8 mm



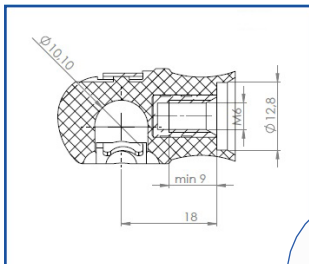
REF 72421 PLASTIC



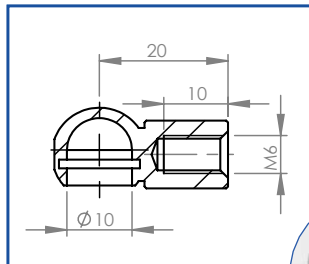
REF ST 07 2421-110 STEEL



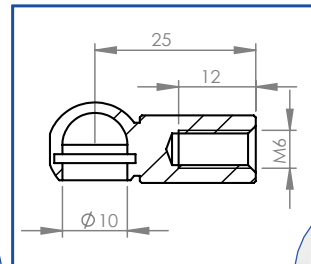
REF 72421AC-10E STEEL



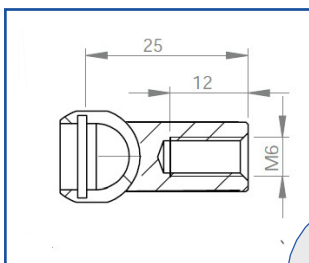
REF 72421AT PLASTIC



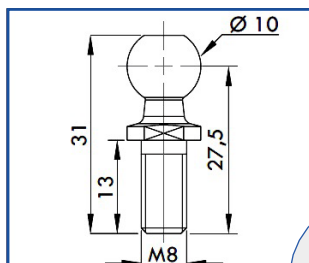
REF 92221 STEEL



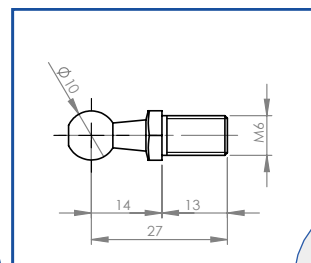
REF 92220 STEEL



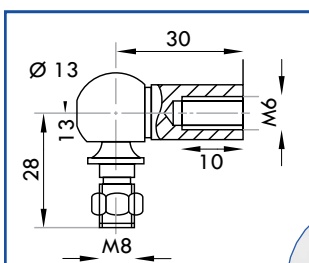
REF 92220A STEEL



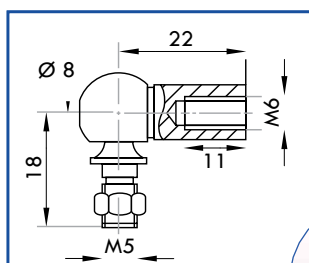
REF 92990 STEEL



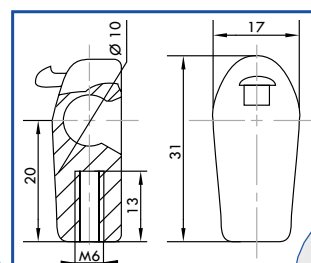
REF 92989 STEEL



REF 92220-13 E STEEL



REF 92220-6-5 STEEL



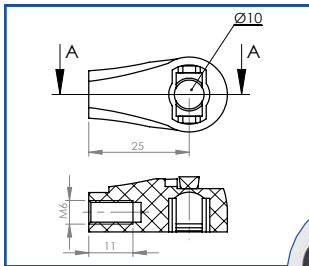
REF 92722 PLASTIC



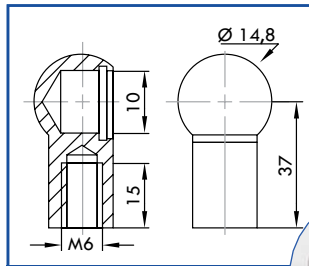
ACCESSORIES

STANDARD M6

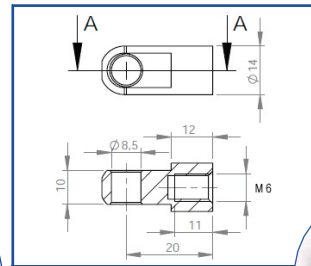
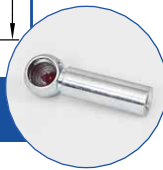
USE ONLY FOR THE GAS SPRINGS WITH A PISTON DIAMETER OF 6 mm AND 8 mm



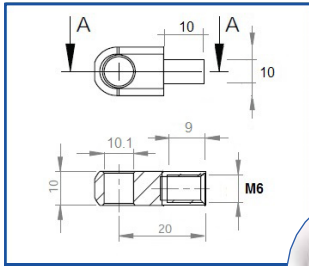
REF 92720 PLASTIC



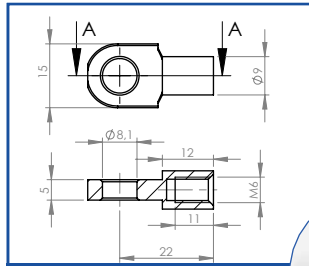
REF 92220-37 STEEL



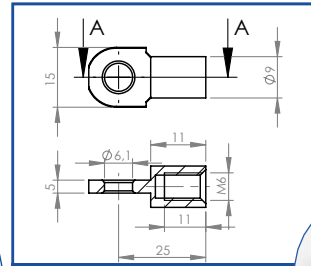
REF HG CHM6 STEEL



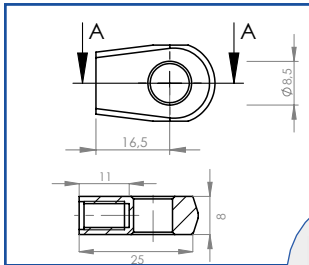
REF HG CHM6-10 STEEL



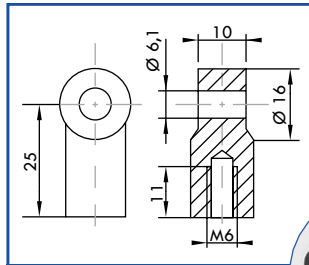
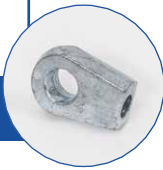
REF ST 1304 STEEL



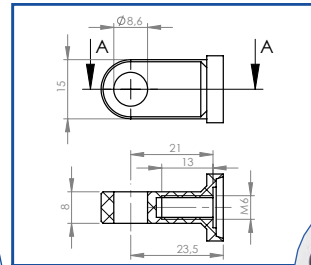
REF ST 1305 STEEL



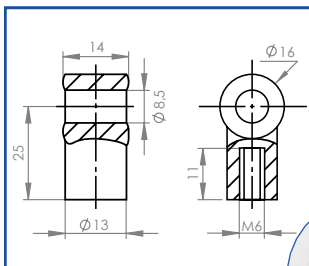
REF 92259 ZAMACK



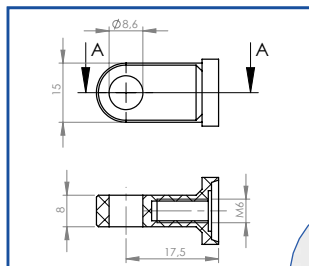
REF 92528 PLASTIC



REF 92521 PLASTIC



REF 92522 PLASTIC



REF 92263 ALUMINIUM

