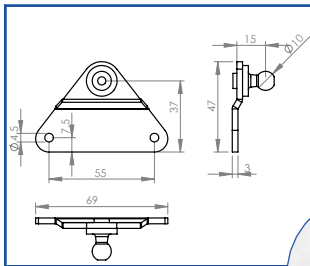
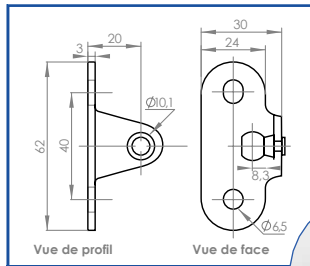




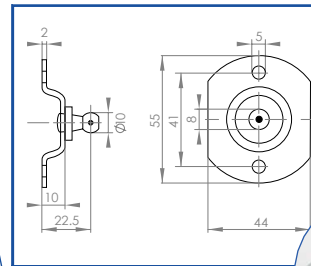
# SPECIFIC ACCESSORIES



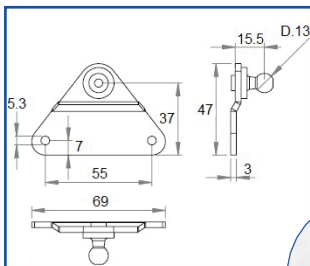
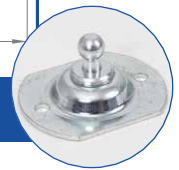
**REF ST 92298** STEEL



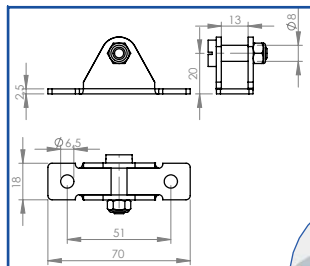
**REF ST 92992** STEEL



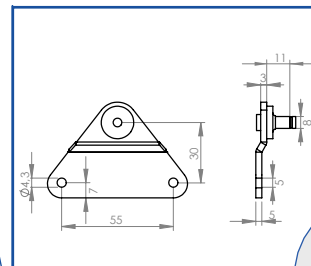
**REF HG 92293** STEEL



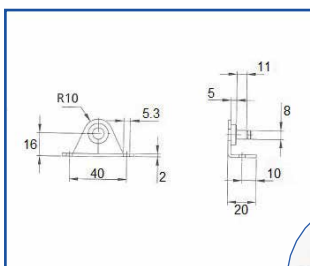
**REF HG BA 01 K13** PLASTIC



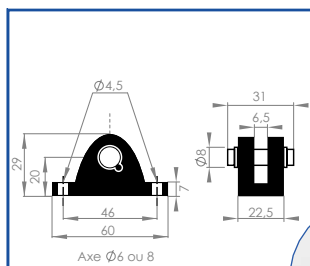
**REF HG 100/2** STEEL



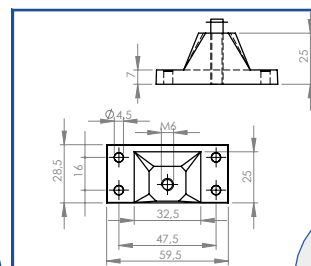
**REF HG 101** STEEL



**REF HG BA 30 Z08** PLASTIC



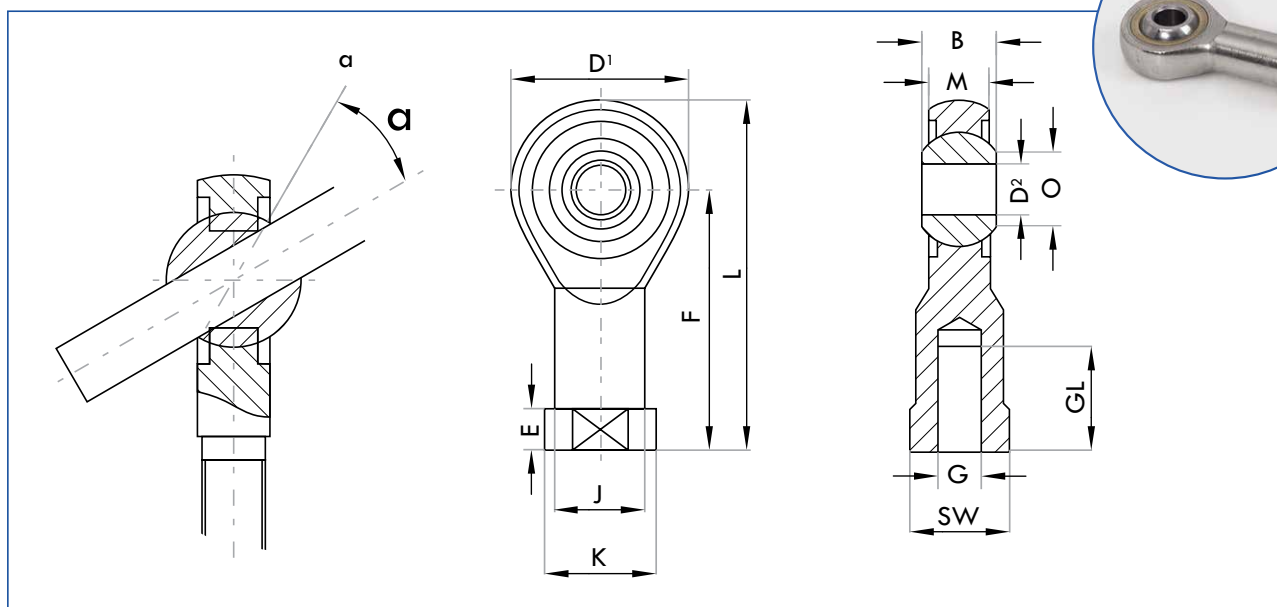
**REF STP 100(Ø6)**  
**REF STP 100D8 (Ø8)** STEEL



**REF ST P101** STEEL



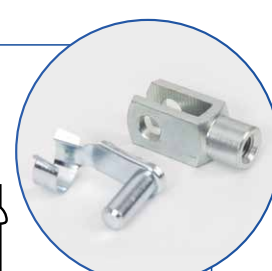
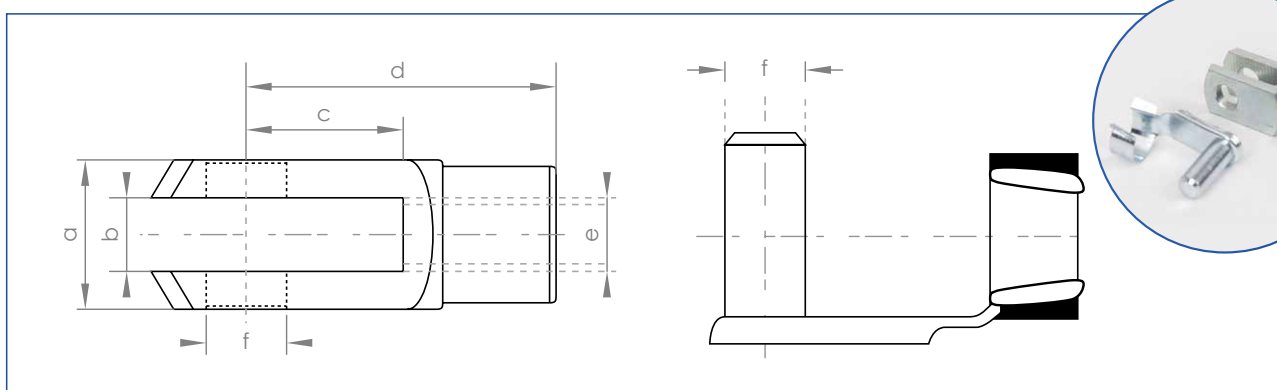
# SPECIFIC ACCESSORIES



**GELENKKOPE**

STEEL

REF.	D2	B	M	O	D1	F	L	GL	K	J	E	THREAD	SW	ANGLE	WEIGHT
ST GI6	6	9	6,75	8,90	20	30	40	12	13	10	5	M6	11	13	27
ST GI8	8	12	9	10,40	24	36	48	16	16	12,50	5	M8	13	13	46



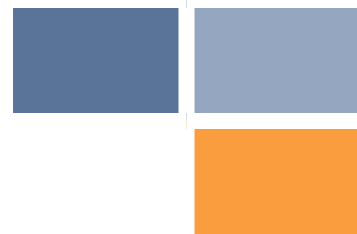
**FORK ST F**

STEEL

**AXIS ST ES**

STEEL

REF.	SIZE	A	B	C	D	E	F	G
ST F6	6x12	12	6	12	24	M6	6	14,50
ST F8	8x16	16	8	16	32	M8	8	18,50
ST ES6	Ø6						6	
ST ES8	Ø8						8	



# SPECIFIC ACCESSORIES

## PROTECTIVE TUBE

The protective tube protects the piston rod of the gas spring against mechanical or chemical damage. It is mainly used in polluted environments or in environments where there is an increased risk of mechanical damage. It

is made of ST34 steel, which is painted with epoxy paint. This component can be used only in gas springs finished by a thread.



## DIRT WIPER

ST RAC dirt wiper protect the internal seal of the gas spring against surrounding contaminants that may reduce its life. ST RAC consists of a scraper (aluminum + nitrile NBR 90SH) and a cap made of PVC. This component is not compatible with safety or protective tubes and can be used only with gas spring finished by a thread.

## SAFETY TUBE

The safety tube allows the locking of the gas spring in the extreme (open) position. Releasing the lock is attained by the slight lifting of the load.

This component is made of STN 34 steel, which is painted in black epoxy paint. Safety tubes can only be used with a gas spring finished by a thread.

