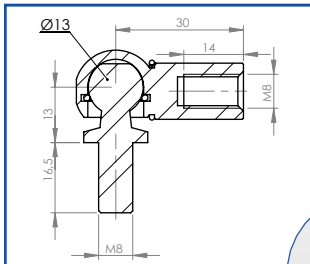


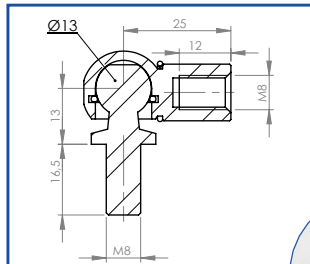
ANSCHLÜSSE M8

VERWENDET FÜR GASDRUCKFEDERN MIT KOLBENDURCHSCHNITT 10 mm UND 14 mm



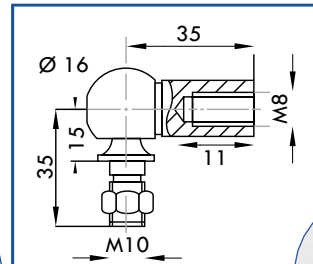
REF 92262

STEEL



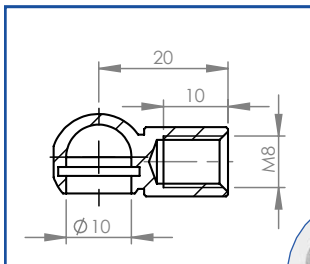
REF 92265

STEEL



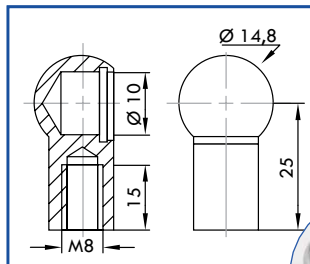
REF 92262-10-8

STEEL



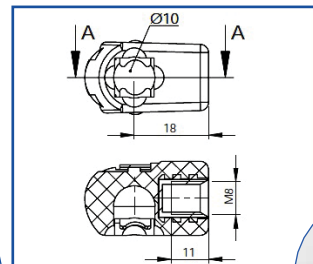
REF 92215

STEEL



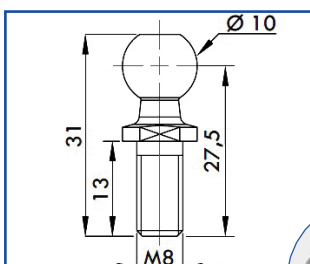
REF 92214

STEEL



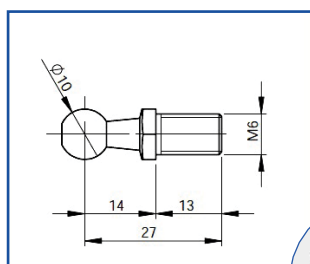
REF 72421-8

PLASTIC



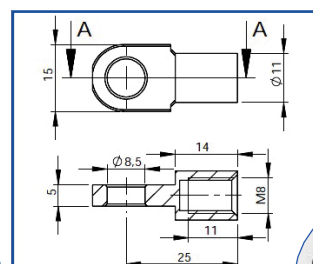
REF 92990

STEEL



REF 92989

STEEL



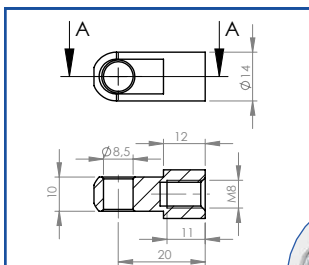
REF 92216

STEEL

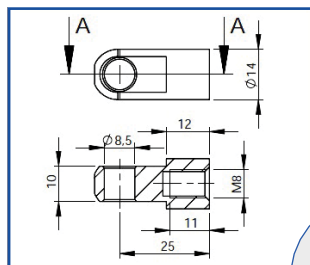


ANSCHLÜSSE M8

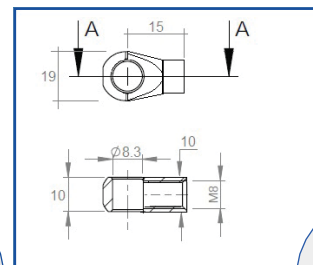
VERWENDET FÜR GASDRUCKFEDERN MIT KOLBENDURCHSCHNITT 10 mm UND 14 mm



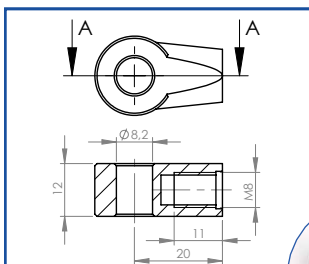
REF HG CH STEEL



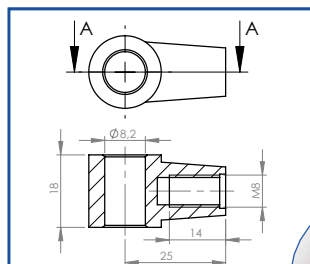
REF 92264 AC STEEL



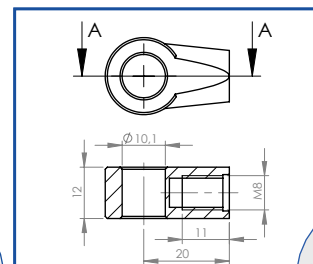
REF ST M2 STEEL



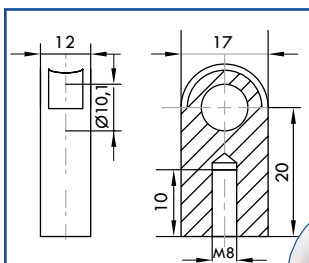
REF 92261 ZAMACK



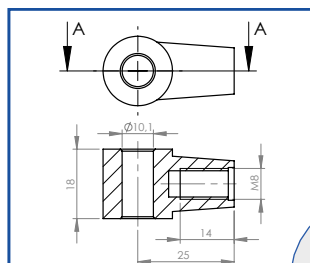
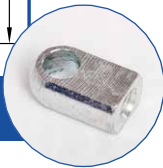
REF 92260 ZAMACK



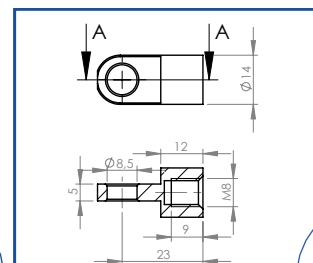
REF 92267 ZAMACK



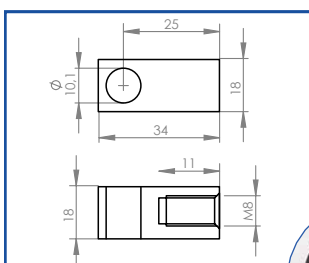
REF 92267 AC STEEL



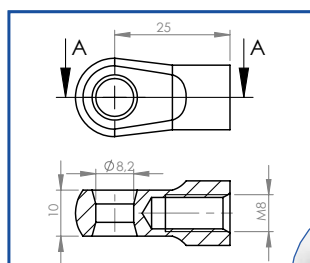
REF 92266 ZAMACK



REF HG 201 STEEL



REF ST 092266N STEEL



REF 92264 ZAMACK

